

AURA DEVELOPERS

# AUORA

R E S I D E N C E S



Gulberg II · Lahore

A CONSIDERED ADDRESS FOR A CONSIDERED FEW

**LIGHT BECOMES  
PART OF LIVING,  
WOVEN INTO  
EVERY SPACE,  
CHANGING IN  
EVERY HOUR.**

---

Aurora is conceived as a living response to light.  
Architecture here is not static — it listens, frames, and transforms.

THE ADDRESS

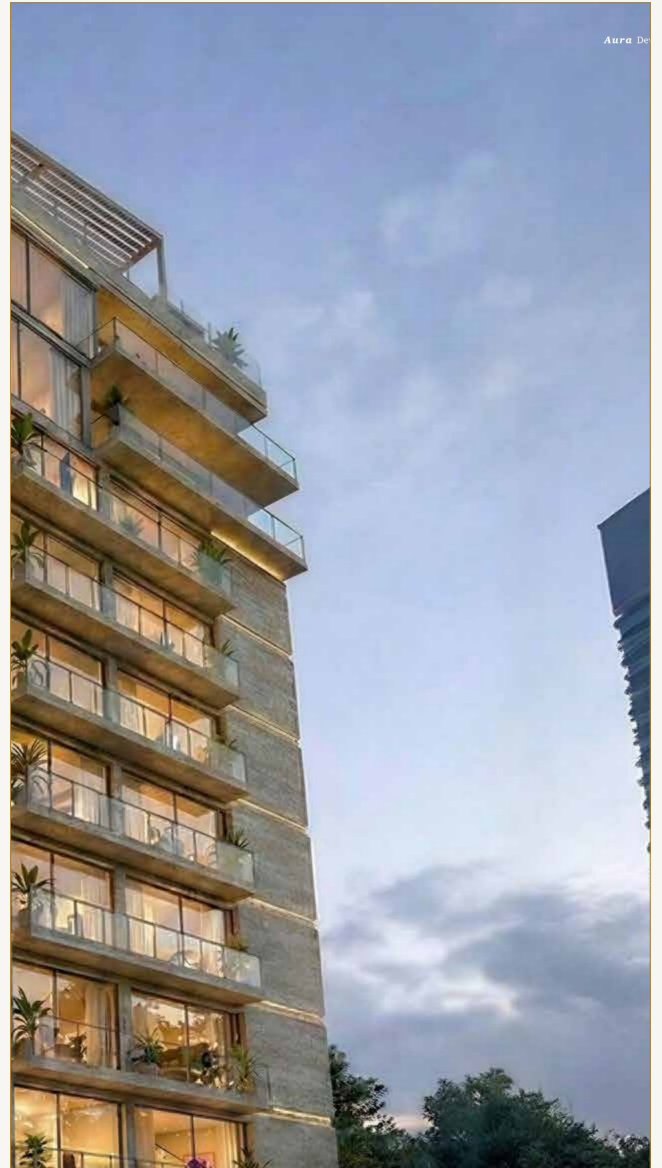
# AN ADDRESS OF DISTINCTION

IN THE HEART OF LAHORE

In Gulberg II, Aurora introduces a considered approach to vertical living — one shaped by privacy, proportion, and permanence.

Set within one of Lahore's most established and sought-after districts, the building stands as a refined residential statement: contemporary in expression, deliberate in detail, and deeply connected to the city.

This is an address created for those who value discretion as much as distinction — a home that balances elegance with precision, and urban access with a sense of repose.



## GULBERG II

Lahore's most prestigious residential address.  
Established, desirable, and enduring.



ARCHITECTURE

## A FAÇADE SHAPED BY NATURE

Crystalline glass, fairface concrete, and living greenery.  
Architecture that engages light, shadow, and the passing of time.

# EIGHTEEN HOMES OF RARE DISTINCTION

Interiors at Aurora are composed as quiet dialogues between material, light, and proportion. Each residence is conceived as a private world — complete, considered, and enduring.

## 8 Two-Bedroom Residences

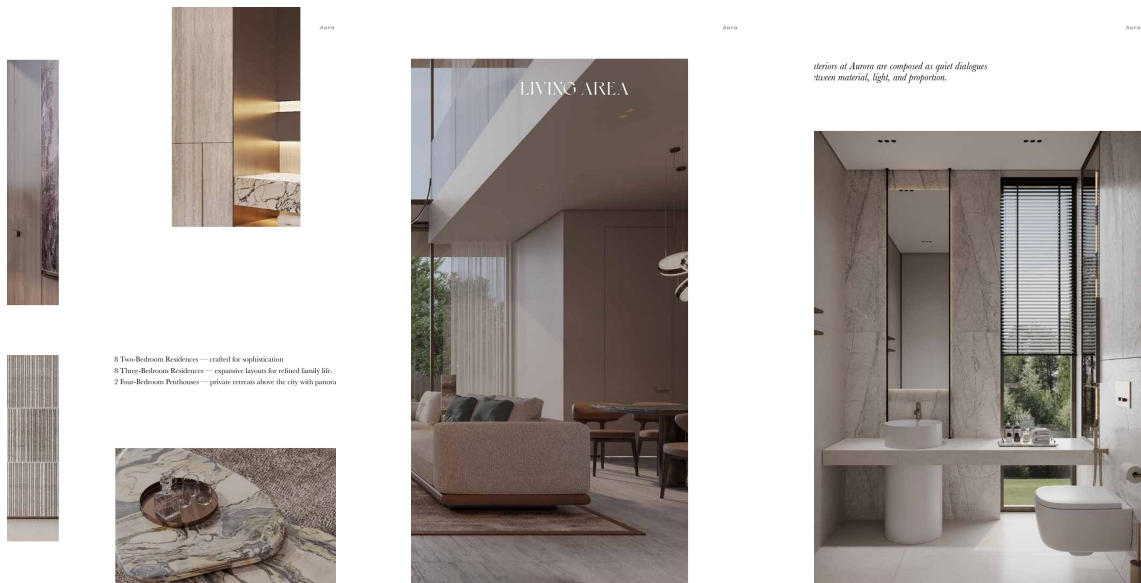
Crafted for sophistication. 165 m<sup>2</sup> / 1,613 ft<sup>2</sup>

## 8 Three-Bedroom Residences

Expansive layouts for refined family life. 165 m<sup>2</sup> / 1,776 ft<sup>2</sup>

## 2 Four-Bedroom Penthouses

Private retreats above the city with panoramic views





LIVING SPACES

## THE LIVING AREA

Ceiling heights, glazing, and spatial flow — calibrated for openness and calm.

# SPACE YOU CAN FEEL

Stone, wood, and textured surfaces respond differently throughout the day, creating spaces that evolve rather than remain fixed.

This is luxury expressed through restraint — where comfort is intuitive and design never demands attention.

Each room begins with proportion, not decoration. Nothing feels forced. Nothing feels tight.

- Natural stone surfaces
- Oak and walnut millwork
- Floor-to-ceiling glazing
- Acoustic-grade finishes



*Stone, wood, and textured surfaces respond differently throughout the day, creating spaces that evolve rather than remain fixed.*

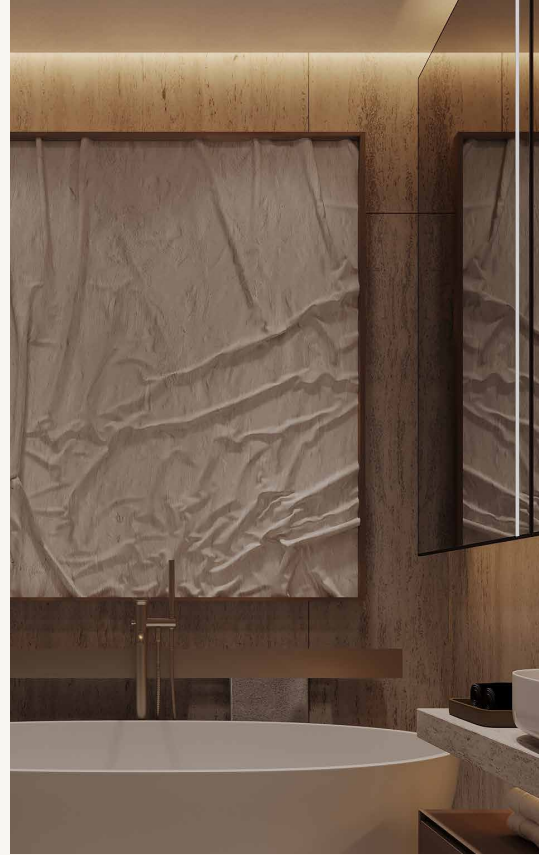


PRIVATE SPACES

## MASTER SUITE

Private spaces conceived as retreats — insulated from noise, pace, and distraction.

## CALM BY DESIGN



Bedroom — proportion, acoustic comfort, and controlled natural light Bathroom — natural materials, soft illumination, quiet continuity

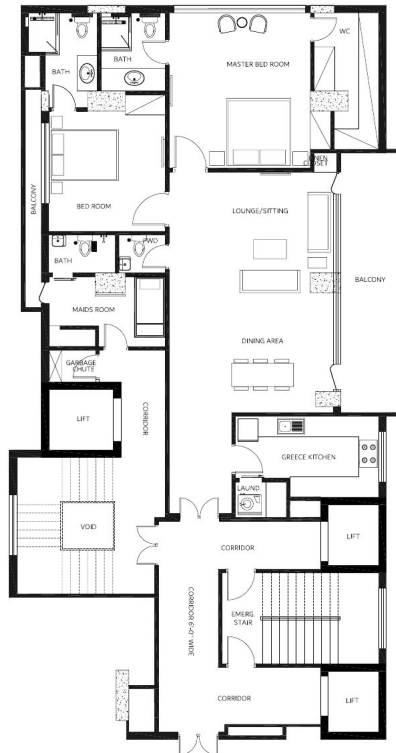
Bedrooms prioritise calm through proportion, acoustic comfort, and controlled natural light. Each is conceived as a private retreat — a place where the pace of the city does not follow you in.

Bathrooms are finished as personal sanctuaries, combining natural materials, soft illumination, and a sense of quiet continuity.

# 2 BEDROOM APARTMENT

Type A · Available on Floors 2 – 8

Aura Developers



**2 Bedroom Apartment Flat (A)**

Specification (Dummy Text)

Total Area	165 m <sup>2</sup> / 1,613 ft <sup>2</sup>
Bedrooms	2
Bathrooms	2 (1 en-suite, 1 shared)

Living / Dining	Open-plan with floor-to-ceiling glazing
Kitchen	Semi-open, premium fittings
Balcony / Terrace	1 private balcony
Storage	Built-in wardrobes
View Orientation	City and partial golf course views

45

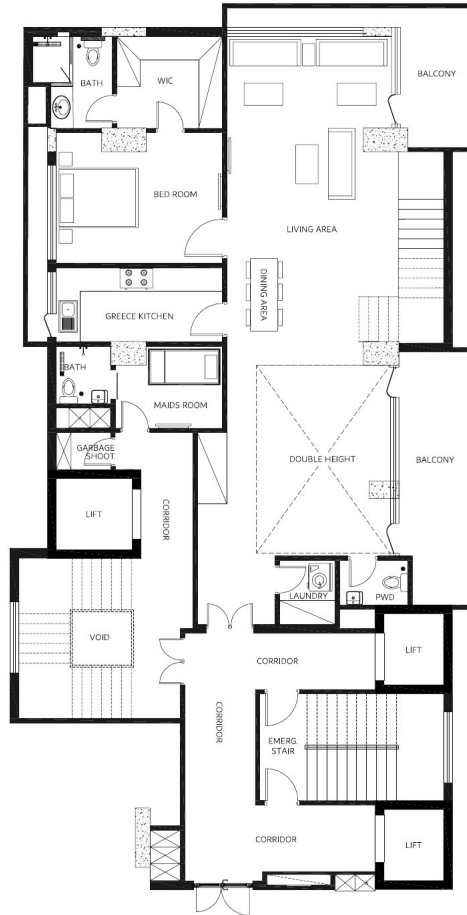
<b>Total Area</b>	165 m <sup>2</sup> / 1,613 ft <sup>2</sup>
<b>Bedrooms</b>	2
<b>Bathrooms</b>	2 (1 en-suite, 1 shared)

<b>Living / Dining</b>	Open-plan, floor-to-ceiling glazing
<b>Kitchen</b>	Semi-open, premium fittings
<b>Balcony</b>	1 private balcony

# DUPLEX 3 BEDROOM PENTHOUSE

9th & 10th Floor · 2 Units Available

Aura Developers



**Duplex 3 bedroom**

Specification (Dummy Text)

Total Area	165 m <sup>2</sup> / 1,776 ft <sup>2</sup>
Bedrooms	3
Bathrooms	2 (1 en-suite, 1 shared)

Living / Dining	Open-plan with floor-to-ceiling glazing
Kitchen	Semi-open, premium fittings
Balcony / Terrace	1 private balcony
Storage	Built-in wardrobes
View Orientation	City and partial golf course views

49

<b>Total Area</b>	303 m <sup>2</sup> / 3,263 ft <sup>2</sup>	<b>Bedrooms</b>	3
<b>9th Floor</b>	156 m <sup>2</sup> / 1,682 ft <sup>2</sup>	<b>Bathrooms</b>	3
<b>10th Floor</b>	147 m <sup>2</sup> / 1,581 ft <sup>2</sup>	<b>Balcony</b>	1 private balcony + terrace



## AMENITIES

---

# AMENITIES EXTEND THE LIVING EXPERIENCE

---

- Rooftop pool and entertainment deck with sweeping vistas
- Wellness suite with gym and yoga studio
- Residents' lounge designed for comfort and connection
- Concierge and housekeeping services
- Pet-friendly policies and secure parking
- Energy-efficient building with sustainable design

## LOCATION

---

# GULBERG II

## LAHORE'S PINNACLE OF PRESTIGE

---

Gulberg II represents the pinnacle of Lahore's residential prestige precisely because it has matured. As the city continues to evolve toward higher-density development, addresses within Gulberg retain their relevance, liquidity, and long-term desirability.

Aurora rises within this context: not speculative, but assured.

### CLOSE LANDMARKS

---

Gulberg Galleria Mall  
Cue Cinema  
Main Market Gulberg  
Gymkhana Club  
Askari Tower

### EDUCATION

---

Grammer School Main Gulberg  
TNS Beaconhouse  
University of Home Economics  
Kinnard College

### DINING & LEISURE

---

MM Alam Road  
Main Market Gulberg  
Lahore Medics  
College Road

---

24/7 security services · State-of-the-art surveillance

Smart home features · Concierge & housekeeping · High-end retail within the project

# AURORA

R E S I D E N C E S

A U R A D E V E L O P E R S

Gulberg II · Lahore

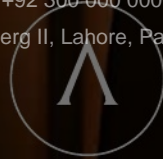
**ENQUIRE TODAY**

[auradevelopers.com](http://auradevelopers.com)

[info@auradevelopers.com](mailto:info@auradevelopers.com)

+92 300 000 0000

Gulberg II, Lahore, Pakistan



All renders are indicative. Specifications subject to change. © 2026 Aura Developers.